

LASER SCANNING

Murphy Surveys was one of the first companies in Ireland to apply laser scanning technology in the field. This is further proof of our dedication to provide excellent results with efficiency and accuracy through our use of and quest for cutting edge technology. The laser scanner is a relatively new but very important tool in our armoury.

The Leica HDS3000 and HDS6000 Laser Scanners, as used by Murphy Surveys, unobtrusively captures the three-dimensional surface geometry of structures and sites with completeness, speed, accuracy and safety. As laser surveys can be completed without direct physical access, it enables the survey of potentially hazardous structures or locations with accessibility issues without compromising the safety of individuals.

Scanning is used in surveying, architecture, engineering, construction, visual simulation, virtual reality, entertainment and manufacturing applications – specific applications include the following:

- Site and Engineering surveys
- Archaeological & Built Heritage Record
- Pipeline surveys
- Topographic and detail surveys
- Bridge, overpass and tower surveys
- Fabrication and construction inspection
- Legal archive
- Architectural restoration
- As-built and As-Constructed surveys
- Profiles and volumes
- Forensics and deformation analysis
- Virtual reality and visualisation simulation
- Manufacturing and reverse engineering
- Set surveys for movie and visual effects

BENEFITS

Cost Reduction

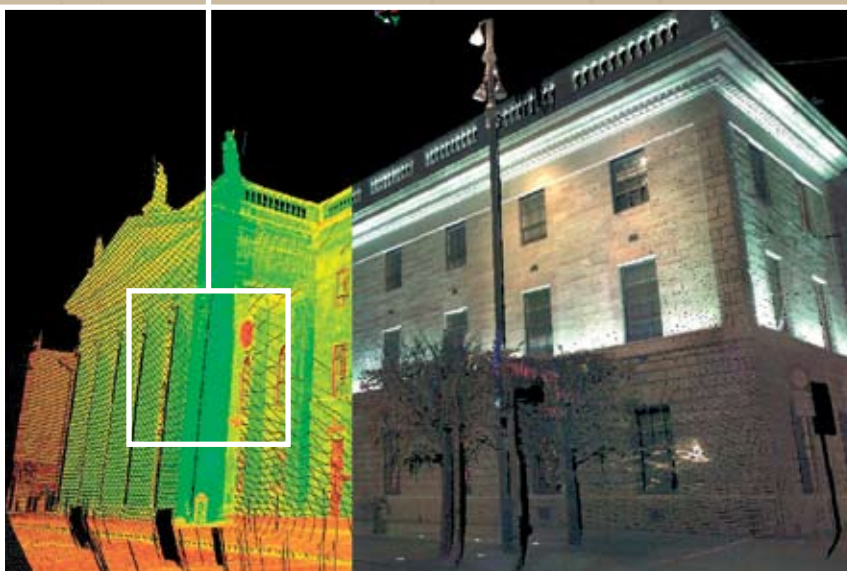
- Costs associated with construction re-work and field changes are minimized as are facility downtimes and turnaround durations.
- Lower cost as-built and topographic surveys compared to alternatives

Quality Improvement

- Improved accuracy and precision reduces many of the risks associated with project execution.
- Better information leads to more informed decisions.
- Accurate and detailed information improves engineering designs and many of the decisions that effect construction start up. More accurate, complete as-built surveys for retrofit design, translates into better retrofit designs
- Less construction re-work due to interferences and fit up problems

Scheduling improvement

- Time spent on site collecting data is significantly reduced.
- Design efficiency is greatly improved
- Construction turnarounds are minimized.
- Reduction / elimination of return visits to the site
- Ability to factory fabricate instead of having to field fabricate



Offices in Kildare, Cork, Belfast, London. Head office + 353 45 484040 info@murphysurveys.ie