

PHOTOGRAPHIC SURVEYS - AERIAL PHOTOGRAPHY

First rate geographic information rests on a foundation of first class aerial photos in almost all cases. There is no other method which allows such large areas to be captured cost effectively, quickly, homogeneously and accurately. Murphy Surveys are delighted to be the first company to introduce such advances to the Irish and UK markets through our relationship with Hansa Luftbild, world leader in aerial photographic surveying.

With over eighty years experience in their field, Hansa Luftbild set the parameters by which their competitors aim to work. Knowing exactly what is required, Hansa Luftbild are equipped with and only use the best resources available to ensure nothing but the best results for any project: their own aircraft, equipment, know-how and expertise. As with Murphy Surveys, Hansa Luftbild demand the nothing but the latest in proven technologies which includes black and white, colour and colour infrared imaging systems, thermal and laser scanners and post capture processing systems. The similarities in the ethos of both Murphy Surveys and Hansa Luftbild in addition to our own ongoing quest to develop the services available to our clients led us to develop this relationship.

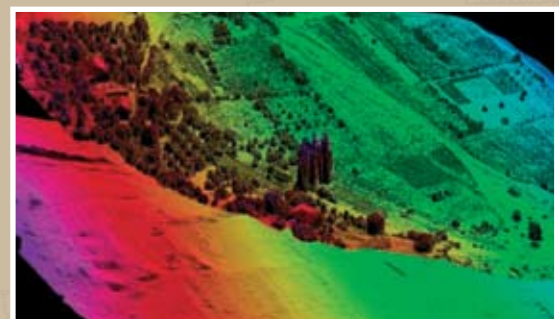
The aerial aspect of the project is not the final product. Our clients can rely on the extensive experience of Hansa Luftbild's specialists. When combining their client centred consulting, technologically innovative and efficient products in addition to quality controls at every stage of production ensure that all projects are given "the edge".

Precise Geo-referencing of captured data through automated processing (aerial triangulation, inertial systems, ortho-rectification) guarantees efficient and accurate processing of data. Geo-referenced and rectified photos are used as mosaics to add data to geographic information systems or for map production. The speed with which the data is available makes it ideal for the documentation and analysis of current issues and problems.

The restitution of photos using photogrammetry and interpretation, lays the foundation for the long-lasting and complex data geographic information systems.

SERVICES:

- Airborne Data Capture – aerial photography, laser scanning and thermal scanning
- Development of aerial film for all standard processes
- Scanning of analogue aerial photos
- Geo-referencing of photo data; directly through and inertial navigation system or through aerial triangulation
- Ortho-photo rectification and image mosaicing
- Production of digital terrain models (DTM)
- Restitution in 2D, 3D, digital or analogue data
- Data processing for all standards and systems



Offices in Kildare, Cork, Belfast, London. Head office + 353 45 484040 info@murphysurveys.ie